



(2018 )



---

2018	.....	1
1.1	.....	1
1.2	.....	1
2018	.....	1
2.1 2018	.....	1
2.2	.....	2
2.3	.....	3
2.4	.....	4
2.6	.....	6
2.7	.....	6
	.....	7
3.1	.....	7
3.2	.....	11
	.....	11
4.1	.....	12
4.2	.....	12
4.3 /	.....	15
4.4	.....	16
4.5	.....	17
4.6	.....	17
4.7	.....	19
4.8	.....	19
	.....	20



## 2018

### 1.1

2018

143

24

46.15%

#### 1.1 2018

		(%)
	93	65%
	50	35%
	66	46.15%
	77	53.85%

#### 1.2 2018

				<sup>1</sup>				<sup>2</sup>		<sup>3</sup>	
	143	48	33.57%	39	27.27%	1	0.70%	45	31.47%	133	93.01%

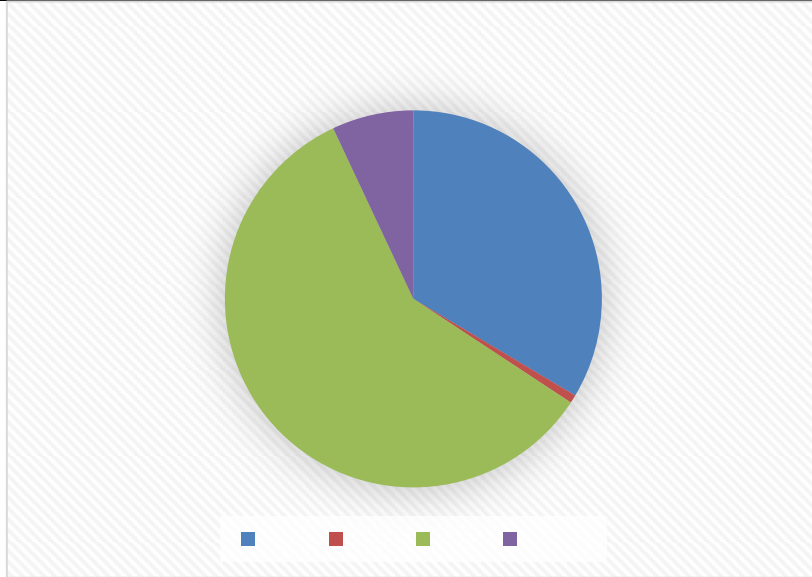
## 2018

### 2.1 2018

#### 2.1 2018

	48	1	84	10	143
	33.57%	0.70%	58.74%	6.99%	100%

1  
2  
3

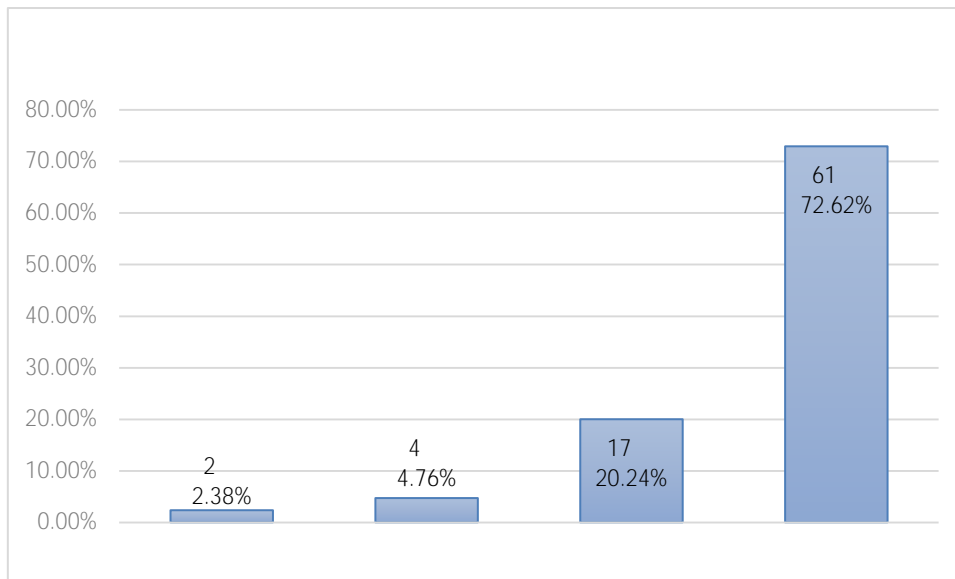


2.1

## 2.2

2.2

	2	2.38%
	4	4.76%
	17	20.24%
	61	72.62%



2.2



7.14%

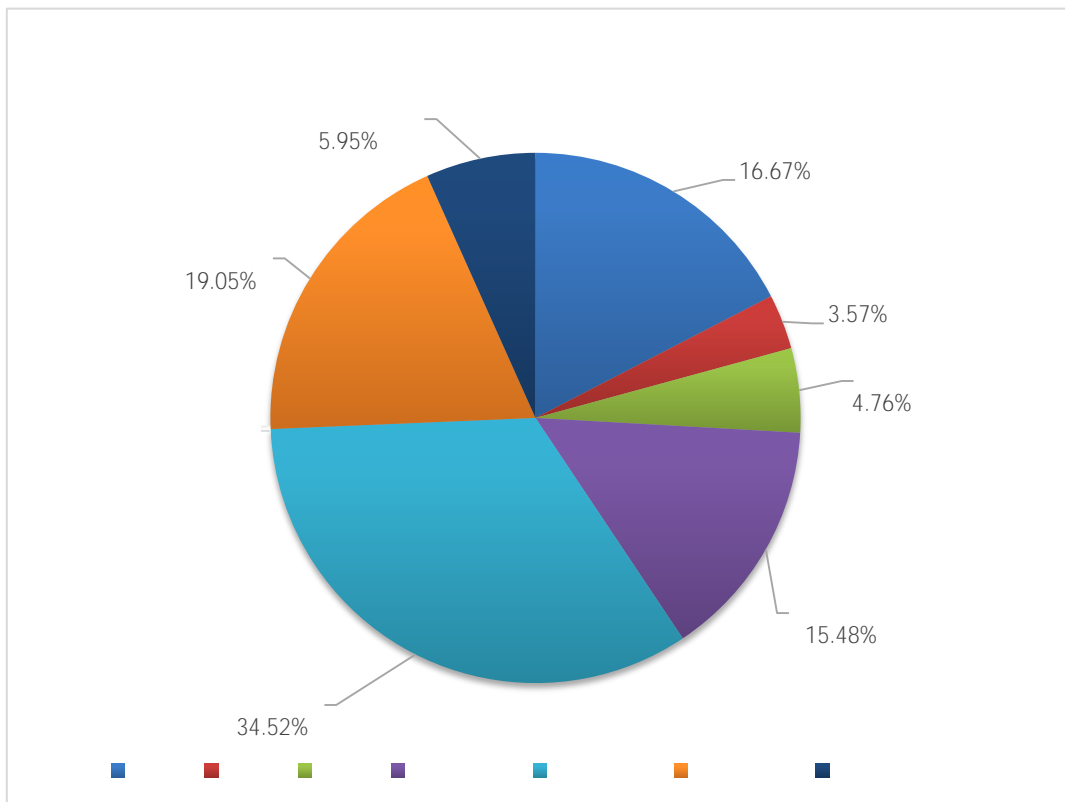
62

72.62%

### 2.3

2.3

	14	3	4	13	29	16	5
	16.67%	3.57%	4.76%	15.48%	34.52%	19.05%	5.95%



2.3



## 2.4

### 2.4

	3	3.57%
	4	4.76%
	2	2.38%
	2	2.38%
IT	43	51.2%
	1	1.19%
	2	2.38%
	21	25%
	2	2.38%
	4	4.76%

51.2%

IT

## 2.5

### 2.5.1 985

2.5 2018

985

	3		1
	1		1
	1		1
	1		1



I

II

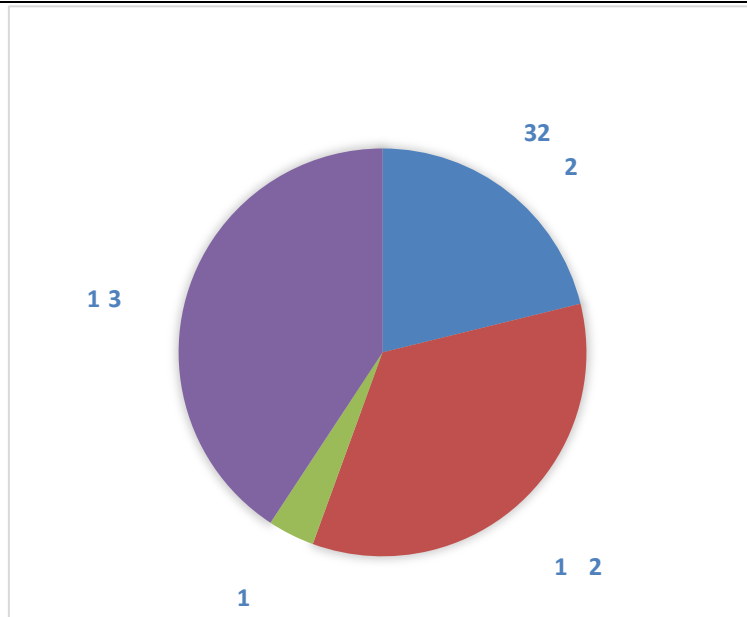
---

**2.5.2 211**

2.6 2018

211

	4		4



2.4

## 2.6

2018

1

0.7%

## 2.7

2018

10

6

1

70%





### 3.1

#### 3.1.1

5

2018      2017                                      2018      2016                                      35

#### 3.1

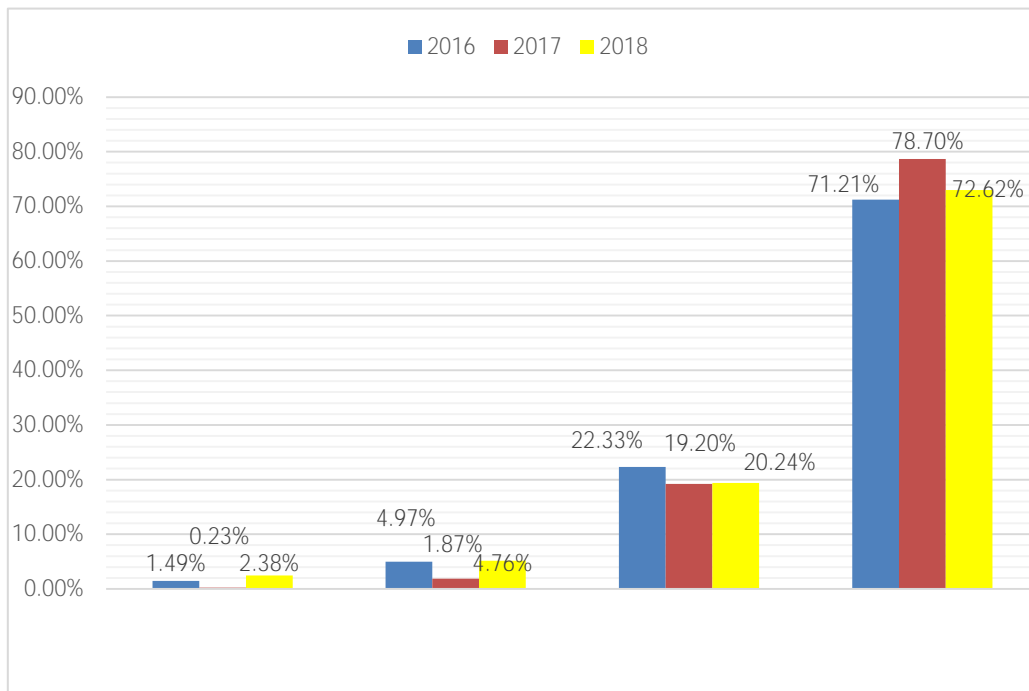
	2016	2017	2018
	78	99	93
	31	46	50
	109	145	143
	2.52	2.15	1.86



### 3.2

90%

### 3.1.3



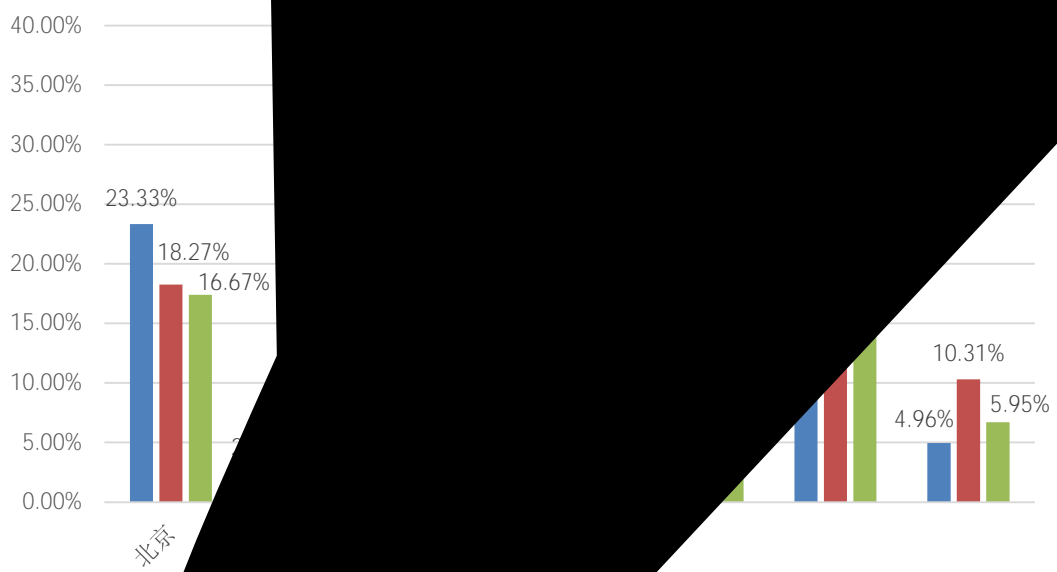
3.1

(

IT

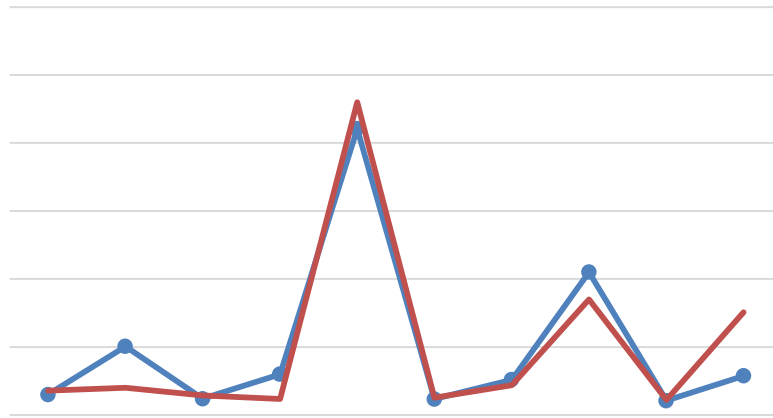


### 3.1.4





### 3.1.5



3.3

IT

2018



I

II

---

## 3.2

		2018	143
133	2016	2017	



## 4.1

1

## 4.2

QQ

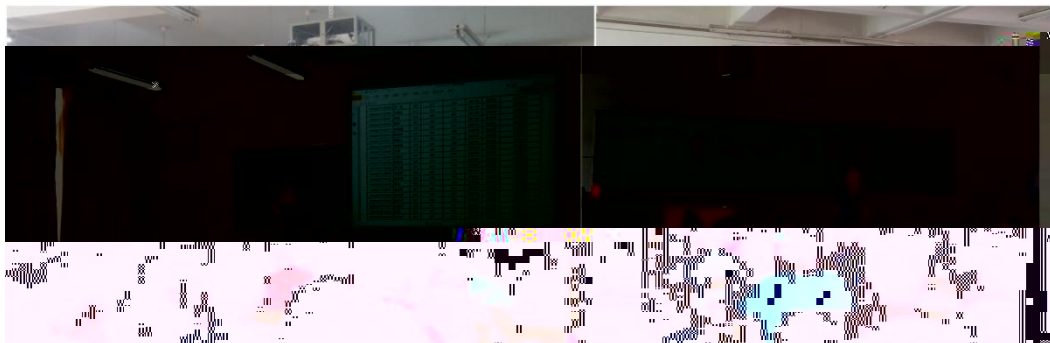








### 4.3 /





I II

---

/

## 4.4

GYB



## 4.5

## 4.6



|

||



## 4.7

## 4.8



|

||

---

2018

